



CRATHERN

MACHINERY GROUP, INC.

EL-700 The Solution ...

- For short runs
- For binders
- For puzzles
- For book covers

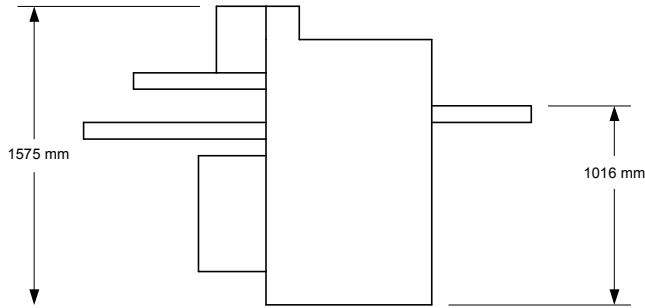
- ◆ **Semi-Automatic Laminator**
- ◆ **Increased Production Capacity**
- ◆ **Automatic Registration**
- ◆ **High Production Speed**
- ◆ **Lower Production Cost**
- ◆ **Fast "Make Ready"**
- ◆ **Easy Maintenance**
- ◆ **Quick Size Change**
- ◆ **Single Operator**
- ◆ **Economical**



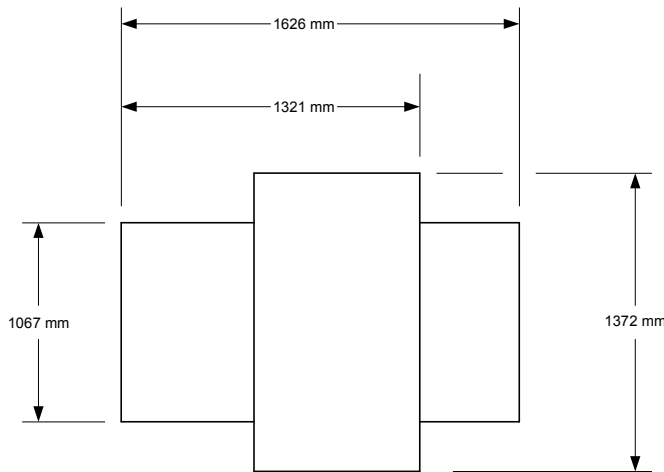
CMG Economy Laminator

Model: EL-700 Semi-Automatic Economy Laminator

SPECIFICATIONS



SIDE VIEW



TOP VIEW

EL-700

Substrate Size Range:

PRODUCT WIDTH: 203 mm - 685 mm*
PRODUCT HEIGHT: 152 mm - 342 mm*
THICKNESS: 1-4 mm chipboard
up to 6.5 mm padded board

**Minimum/Maximum sizes are guidelines only. Consult sales representative.*

Cover Materials:

Printed paper, embossed paper, coated paper, film-laminated paper, backed vinyl, cloth, polyolefins, and more.

Operators Needed: One

Size Change Over:

By operator, five minutes or less.

Production Speed:

Up to twenty pieces per minute, depending on size, type of material, glue and operator skill.

Registration Accuracy: +/- 0.8 mm

Glue: Cold

(Optional: Hot Gelatin Glue)

Energy Requirements:

ELECTRICAL: 8 kva, 3 Phase, 50/60 Hz

Any voltage from 208 to 600

Customer to provide CMG with Voltage requirements

AIR: 142 L/min @ 5.6 kg/cm² (6 Bar)

WATER: 10 mm (3/8") cold water line at normal pressure, no drain required.

Optional Equipment:

Wrapper

Hot Glue System

Backliner

Shipping:

WEIGHT: 1136 kg

Advertised machine production speeds and product quality are based on materials selected by Crathern or actual production reported by our customers. The selection of materials used by each customer is their sole responsibility and will directly effect the product quality and output of the machine.

Due to continuous product improvements, we reserve the right to change or discontinue specifications, designs and manufacturing locations shown in this brochure without notice and without incurring obligation.

date of issue 04/04

FOR DETAILS CONTACT:

Corporate Headquarters: New Hampshire ☎: (603) 314-0444

☎: (800) 746-4111 (USA ONLY)

Web Site: www.crathern.com

Branches: Belgium ☎: 32.(0)9.369.34.55

Italy ☎: 39 (02) 6192287 or 6191637

